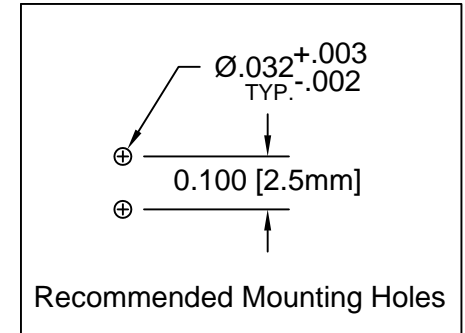
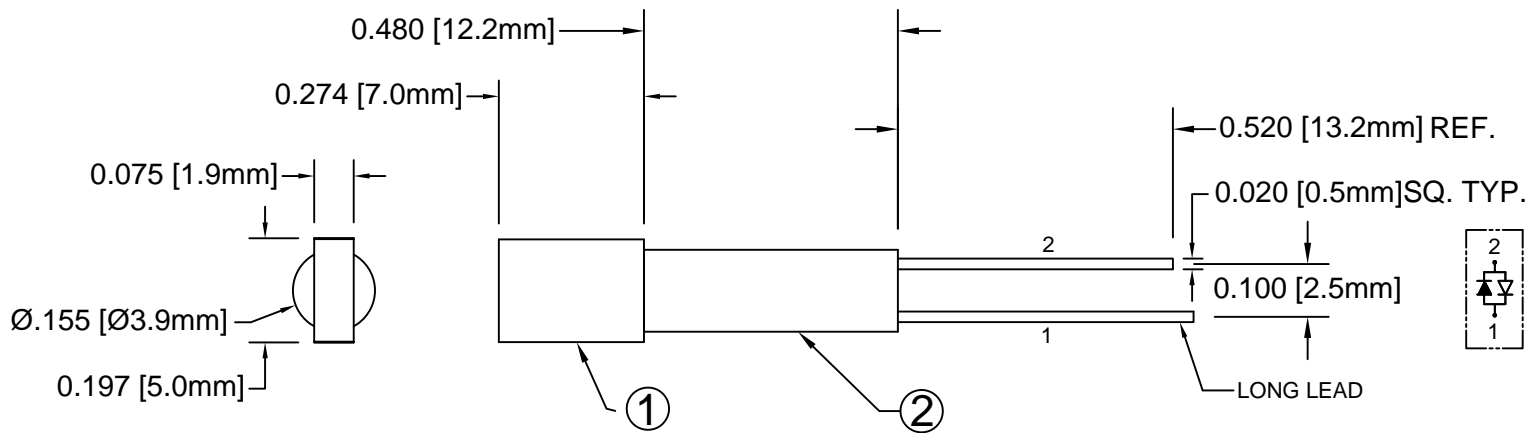


ITEM	Q'TY	PART NUMBER	PART DESCRIPTION
1	1	R5BC	2 x 5mm Rectangular LED
2	1	ELM 5-480	Extruded, Self-Retaining Narrow LED Spacer

REV.	DESCRIPTION	DATE	APPROVED
A	Engineering Release	04/02/10	T. Y.
B	LED Lens Appearance Update	04/14/10	T. Y.
C	Engineering Update w/o Changes	05/25/16	J. C.



(1) Cathode	(2) Cathode
Green	Red

Chip			Lens Appearance	Absolute Max. Ratings			Electro-Optical Data @ 20mA			Viewing Angle 2 θ 1/2 (Deg)
Emitted Color	Peak Wave Length λ_p (nm)	Material		Pd (mW)	If (mA)	Peak If(mA)	Vf (V)		Iv (mcd)	
							TYP	MAX	TYP	
RED	625	GaAsP/GaP	WHITE DIFFUSED	80	30	150	2.0	2.8	4	120
GREEN	568	GaP/GaP		80	30	150	2.1	2.8	3	

ABSOLUTE MAXIMUM RATINGS (Ta=25°C)

REVERSE VOLTAGE _____ 5V
 REVERSE CURRENT _____ 100 μ A
 OPERATING TEMPERATURE RANGE _____ -25°C - 85°C
 STORAGE TEMPERATURE _____ -30°C - 100°C
 LEAD SOLDERING TEMPERATURE(1/16" FROM BODY) _____ 260°C FOR 5 SECONDS

STANDARD TOLERANCE (UNLESS OTHERWISE SPECIFIED)		 4 THOMAS, IRVINE, CA. 92618 TEL: (949) 951-8808 FAX: (949) 951-3974	
DECIMALS	ANGULAR		
.X \pm .1	X° \pm 1°		TITLE: EXTRUDED VERTICAL RCT 2X5 LED NARROW SPACER PROFILE ASSY
.XX \pm .02			
.XXX \pm .010		DESIGNED: R. Paje	DATE: 04/02/10
		CHECKED: T. Yin	DATE: 04/02/10
		PART NO: ELM5480R5BC	REVISION: C
		CAGE CODE : 32559	SHEET # 1 OF 1
CAD GENERATED DOCUMENT. DO NOT MEASURE DRAWING.			