

4

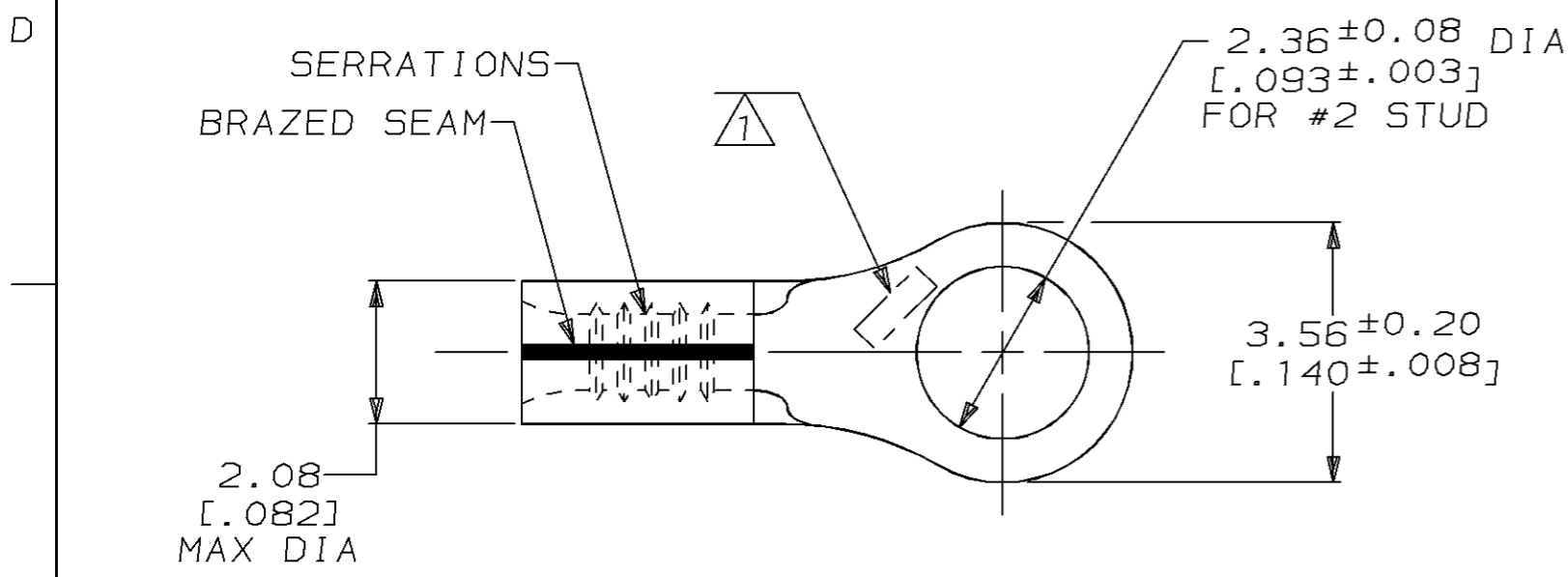
3

2

1

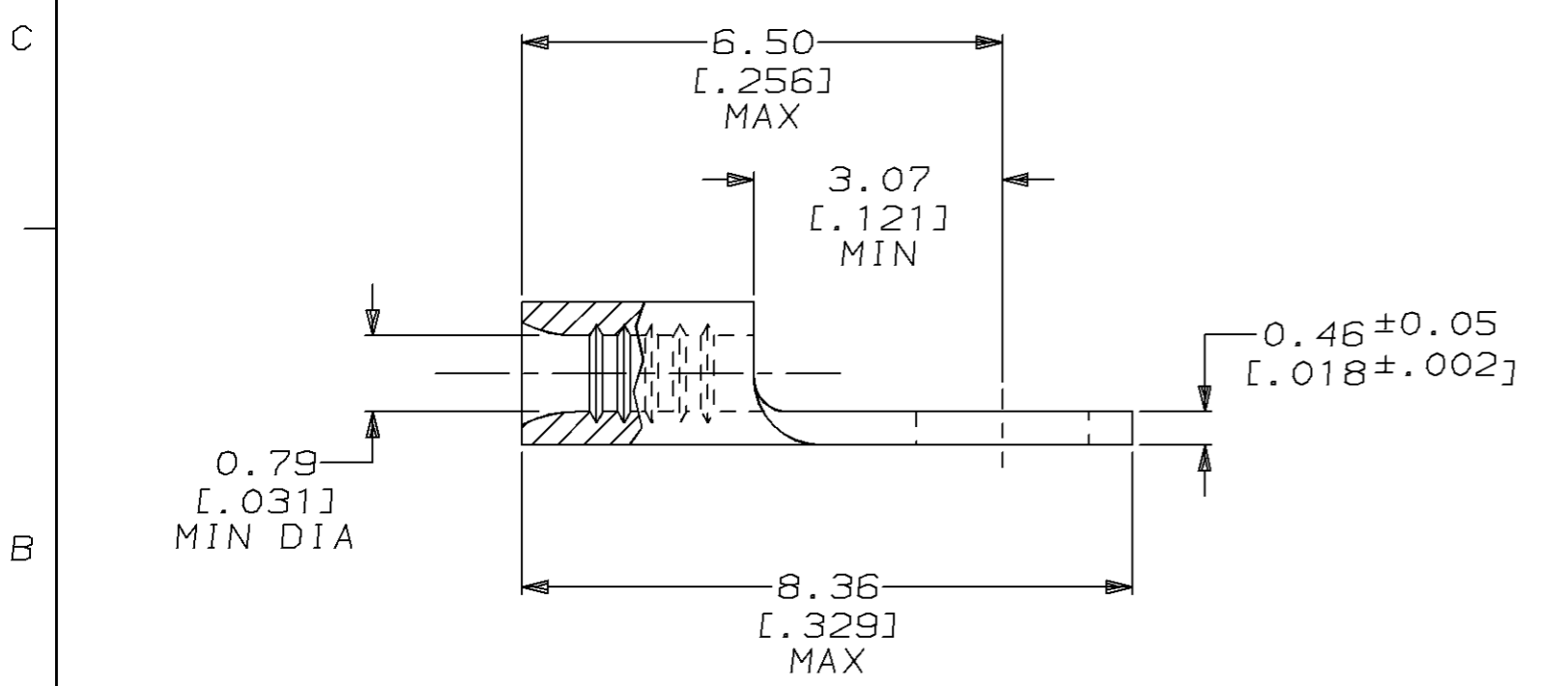
THIS DRAWING IS UNPUBLISHED. RELEASED FOR PUBLICATION ,19 .  
 © COPYRIGHT 19 BY AMP INCORPORATED. ALL RIGHTS RESERVED.

| LOC | DIST | REVISIONS |     |                          |         |     |      |
|-----|------|-----------|-----|--------------------------|---------|-----|------|
|     |      | P         | LTR | DESCRIPTION              | DATE    | DWN | APVD |
| G   | 14   |           | G   | REVISED PER 0L20-0096-97 | 03JUN97 | DKS | MJS  |



|                               |                            |
|-------------------------------|----------------------------|
| <b>AMP</b><br>WIRE RANGE      | <b>UL</b> E13288<br>Listed |
| 26-22 AWG<br>STRANDED         | NOT<br>LISTED              |
| <b>SR</b> LR7189<br>Certified | MILITARY P/N<br>AND CLASS  |
| NOT<br>CERTIFIED              | NOT<br>APPLICABLE          |

1 STAMP AMP APPROX AS SHOWN



|          |               |                    |
|----------|---------------|--------------------|
| 5000     | ON TAPE, REEL | 2-50335-1          |
| —        | LOOSE PIECE   | 50335              |
| QUANTITY | PACKAGE TYPE  | AMP<br>PART NUMBER |

**AMP INCORPORATED**  
**CUSTOMER SERVICE SYSTEMS**

|  |  |  |
|--|--|--|
| FOR ADDITIONAL PRODUCT INFORMATION OR COPIES OF DRAWINGS AND TECHNICAL DOCUMENTS | PRODUCT INFORMATION CENTER<br>1-800-522-6752 | RECOMMENDED OPERATING TEMPERATURE:<br>170°C MAX  |
| FOR APPLICATION TOOLING INFORMATION  | TOOLING ASSISTANCE CENTER<br>1-800-722-1111  | VOLTAGE RATING:<br>NOT APPLICABLE  |
| FOR ORDER ENTRY  | 1-800-526-5142                               | WIRE CROSS SECTIONAL AREA RANGE:<br>0.10-0.41mm <sup>2</sup> [202-810] CIR MILS STRANDED |

THIS DRAWING IS A CONTROLLED DOCUMENT FOR AMP INCORPORATED. IT IS SUBJECT TO CHANGE AND THE CONTROLLING ENGINEERING ORGANIZATION SHOULD BE CONTACTED FOR THE LATEST REVISION.

|  |   |
|--|---|
| DIMENSIONS:<br>mm [INCHES]                       | TOLERANCES UNLESS OTHERWISE SPECIFIED:                              |
|  | 0 PLC ±-  |
|  | 1 PLC ±-  |
|  | 2 PLC ±-  |
|  | 3 PLC ±-  |
|  | 4 PLC ±-  |
|  | ANGLES ±-   |
| MATERIAL<br>COPPER<br>PER ASTM B-152<br>ANNEALED | FINISH<br>TIN PLATE<br>0.00254 [0.000100] MIN<br>THK PER ASTM B-545 |

|                               |  |
|-------------------------------|--|
| DWN<br>DK SCHRUM<br>03JUN97   | <b>AMP</b> AMP Incorporated<br>Harrisburg, PA 17105-3608 |
| CHK<br>MJ SPICER<br>04JUN97   |  |
| APVD<br>JL MECKLEY<br>04JUN97 |  |
| PRODUCT SPEC<br>—             |  |
| APPLICATION SPEC<br>—         | NAME<br>TERMINAL, RING TONGUE,<br>SOLISTRAND™            |
| WEIGHT<br>—                   | SIZE<br>A3   |
| CUSTOMER DRAWING              | CAGE CODE<br>00779                                       |
|                               | DRAWING NO<br>C-50335                                    |
|                               | SCALE<br>10:1  |
|                               | SHEET<br>1 OF 1  |
|                               | REV<br>G   |