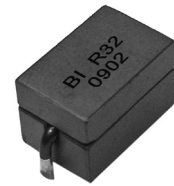


Electrical / Environmental

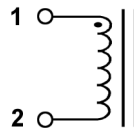
HM37

High Current Low Loss Ferrite Cube Inductors

- Operating Temperature Range -40°C to +130°C



Schematic

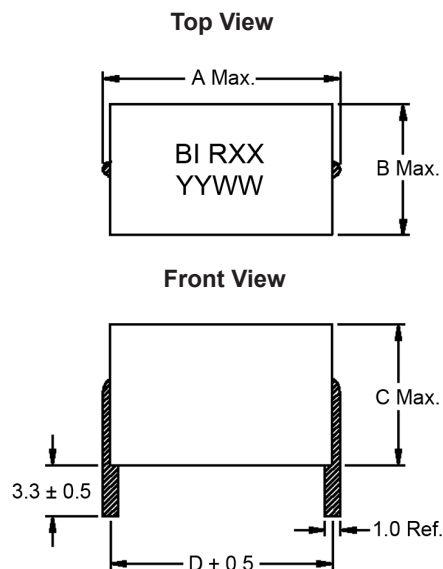


Specifications @ 25°C

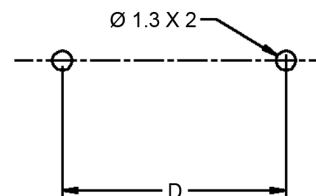
Part Number	Inductance 100 kHz, 0.1 V		Heating Current ⁽¹⁾ (Adc)	I _{sat} ⁽²⁾ (Adc)	DCR (mΩ) ±5%
	@ 0 A nH ± 10%	@ I _{sat} nH Typ.			
HM37-1007R17LF	170	158	42	58	0.37
HM37-1007R19LF	190	180	42	50	0.37
HM37-1609R32LF	320	260	48	50	0.47

- Notes: (1) The heating current is the DC current which causes the component temperature to increase by approximately 50°C. This current is determined by soldering the component on a typical application PCB, and then applying the current to the device for 30 minutes.
 (2) The saturation current (I_{sat}) is the approximate current at which inductance will be decreased by 20% from its initial (zero DC) value.

Outline Dimensions (mm)



Recommended Solder Pad Layout



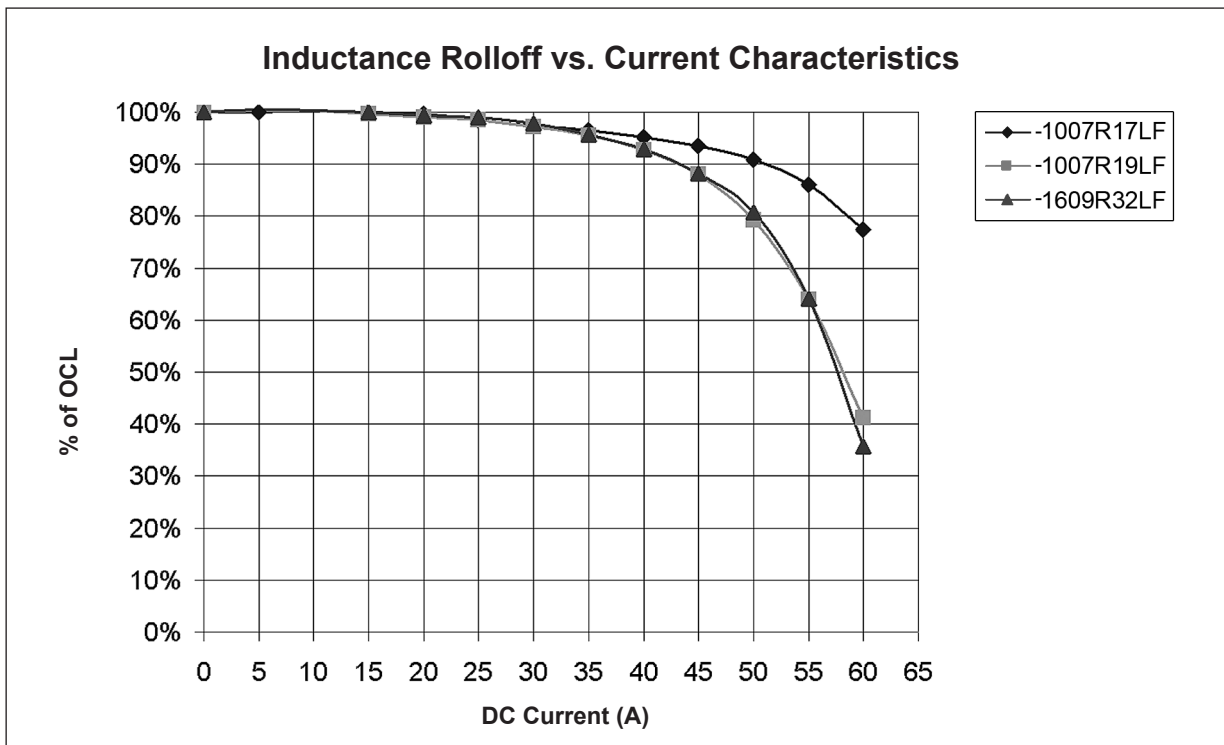
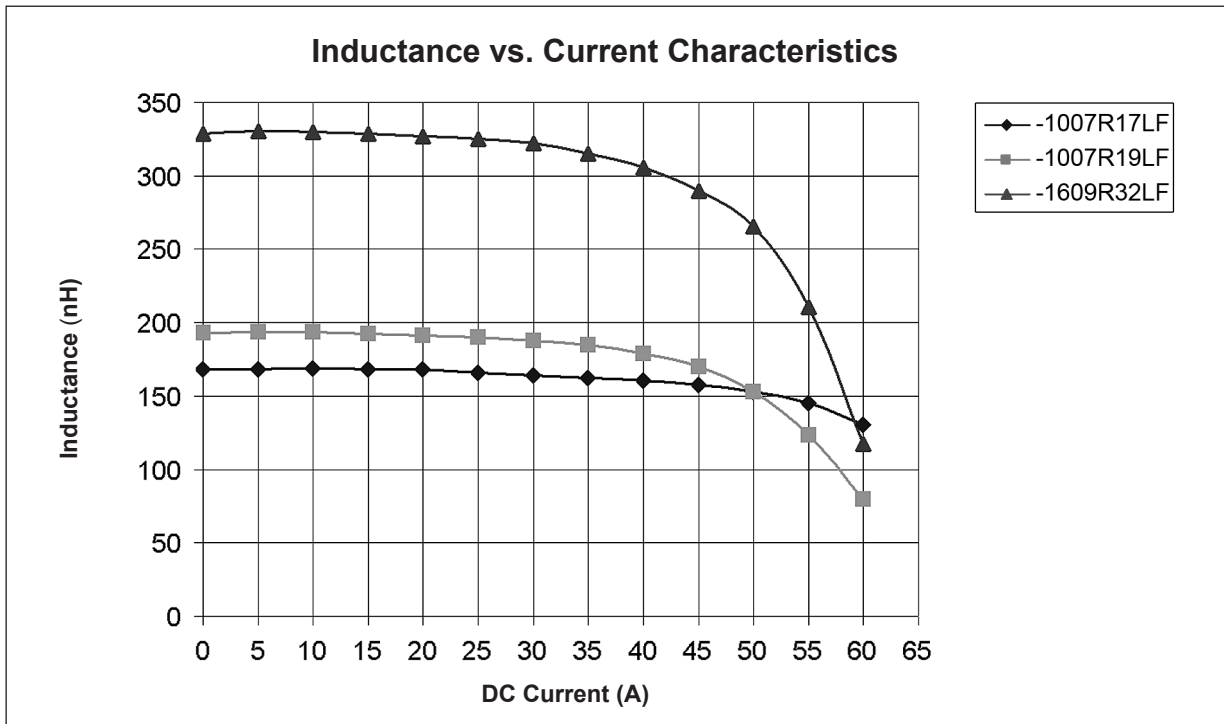
Case Size	A	B	C	D
1007	10.0	7.0	9.5	8.5
1609	15.9	8.9	9.2	14.6

Packaging

Standard: Vacuum Tray

Case Size	Capacity Per Carton (Units)
1007	800
1609	660

Electrical Characteristics @ 25°C



Ordering Information

Model Series **HM37 - 1007 R17 LF**

Case Size : **10** -- (First 2 digits) Length Dimension
07 -- (Last 2 digits) Width Dimension

LF -- Lead-Free
R17 -- Inductance Code