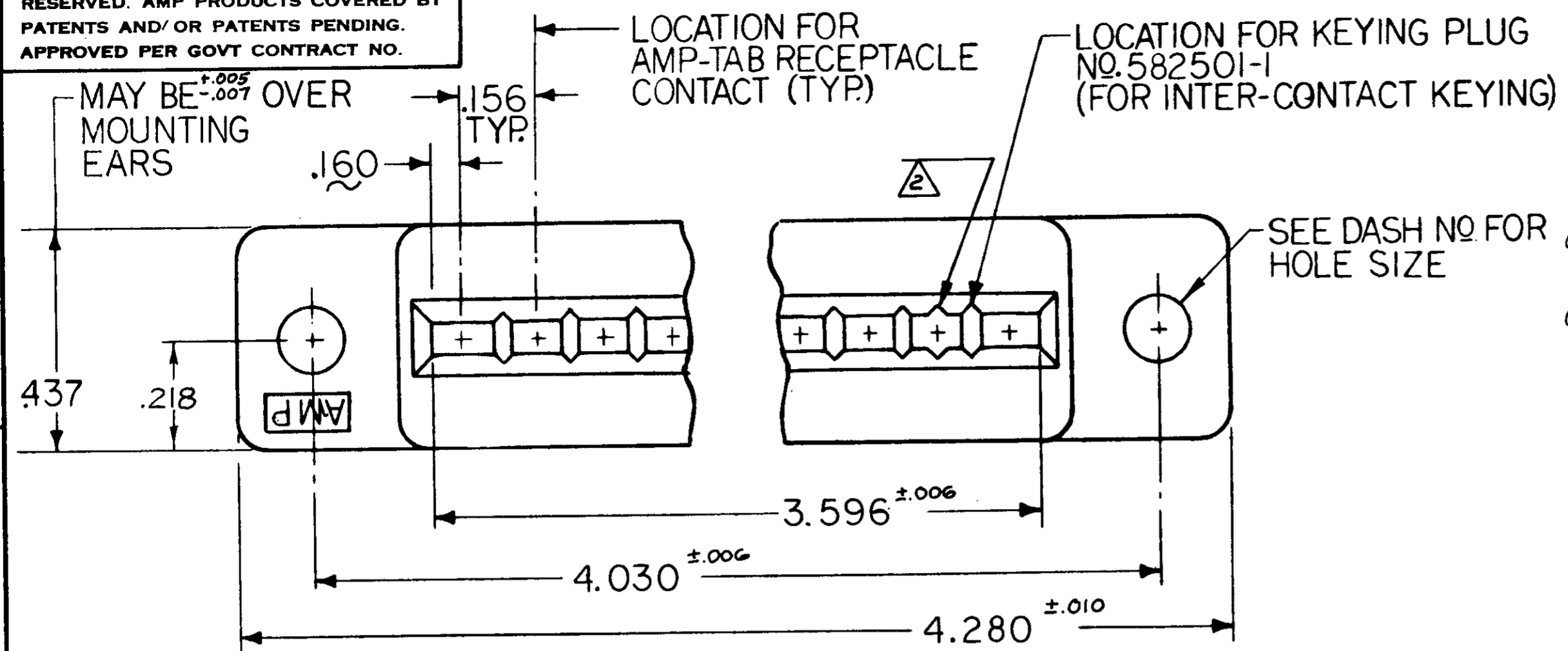
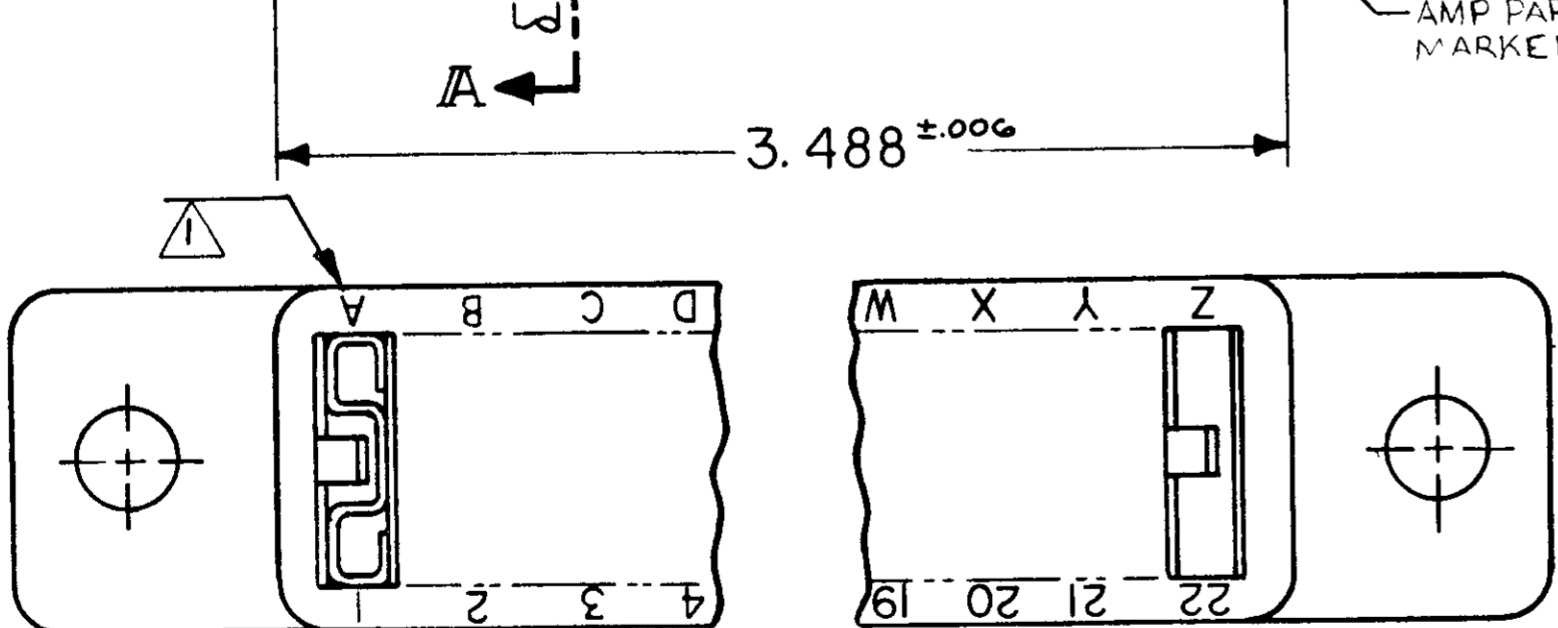
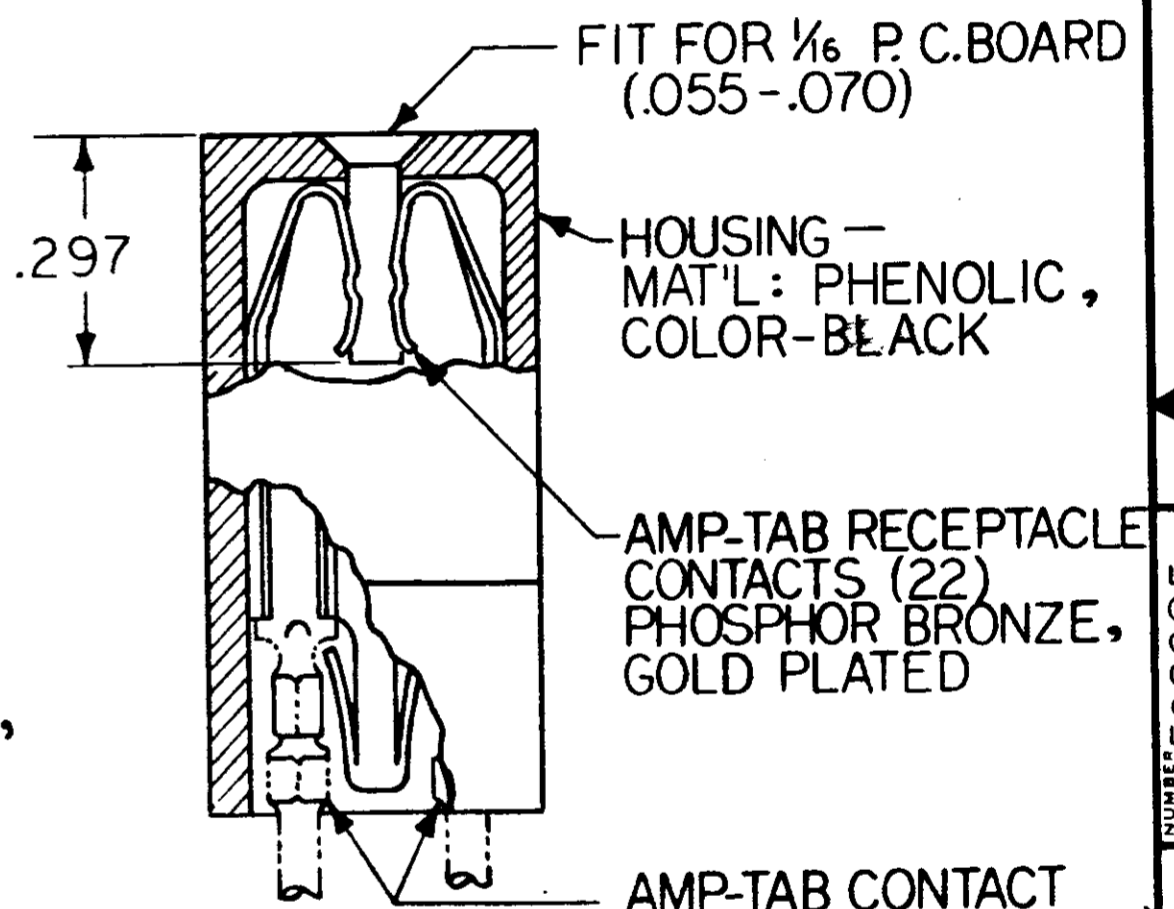
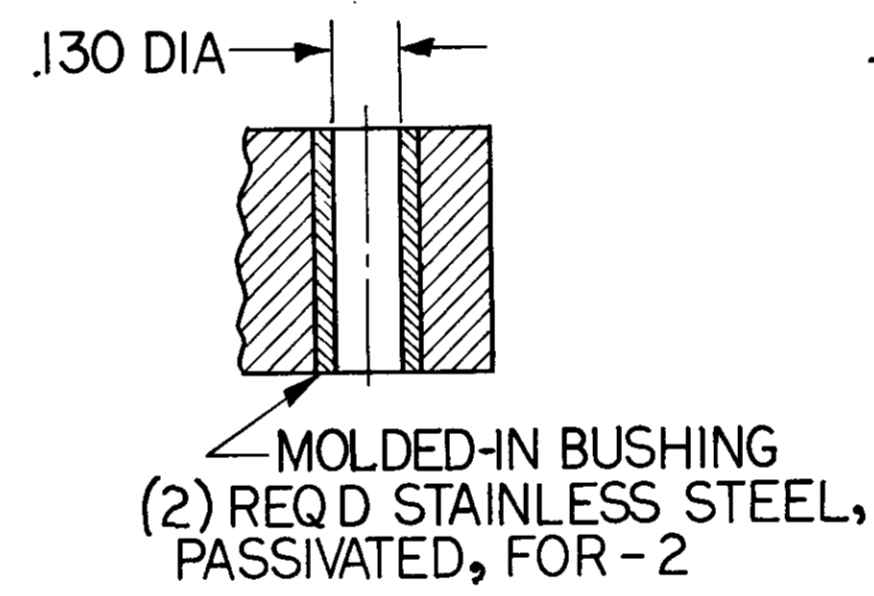
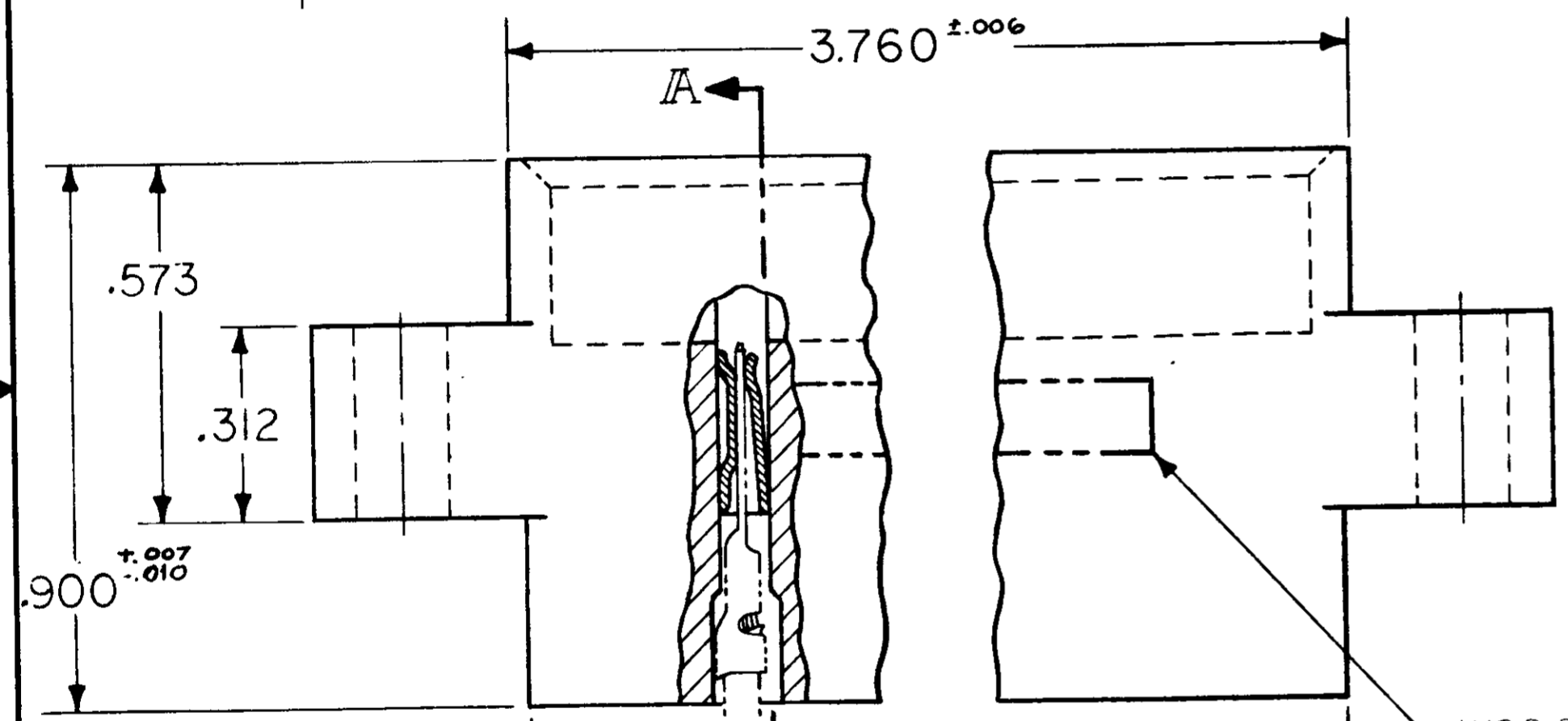


© 1963 BY AMP INCORPORATED. ALL RIGHTS RESERVED. AMP PRODUCTS COVERED BY PATENTS AND/OR PATENTS PENDING. APPROVED PER GOVT CONTRACT NO.

REVISIONS				
ZONE	LTR	DESCRIPTION	DATE	APPROVED
✓	M	REV. SEC PER DG00-3683-95	TA	10-95 J.WARNER
	N	ECO-08-020973	PY	11-08 JW



582695-1 I. AS SHOWN WITH .128 DIA. MOUNTING HOLES.  
~~582695-2 I. SAME AS -1 EXCEPT, WITH MOLDED-IN BUSHING (SEE DETAIL)~~  
~~582695-3 I. SAME AS -1 EXCEPT CAVITY IDENTIFICATION TO BE ALL NUMERIC USING ONLY EVEN NUMBERS. (SEE DETAIL "B")~~



NOTE:  
 1. UPPER CASE LETTERS, LETTERS G, I, O, & Q OMITTED. CIRCUIT CAVITY IDENTIFICATION MARKS PER MIL-C-21007.  
 2. GROOVES FOR "ON CONTACT KEYING" AMP'S OPTION DEPENDING ON METHOD OF MANUFACTURE. FOR "ON CONTACT KEYING" USE KEYING PLUG P/N. 583487-1 (MUST BE ORDERED SEPARATELY.)  
 3. LASER MARKING ACCEPTABLE FOR ALL MARKING

UNLESS OTHERWISE SPECIFIED DIMENSIONS ARE IN INCHES TOLERANCES ON		
FRACTIONS	DECIMALS	ANGLES
±	±.005	±
MATERIAL: SEE CALLOUT		
HEAT TREAT: —		
FINISH: SEE CALLOUT		

<b>AMP</b> TRADE MARK		AMP INCORPORATED HARRISBURG, PENNSYLVANIA	
CONNECTOR, AMP-TAB, DUAL, 22 POS., .156 CTRS.			
SIZE	CODE IDENT NO	NUMBER	REV
C	00779	582695	N
SCALE 4 - 1	WT	CALC	ACTUAL
SHEET			

CUSTOMER DRAWING