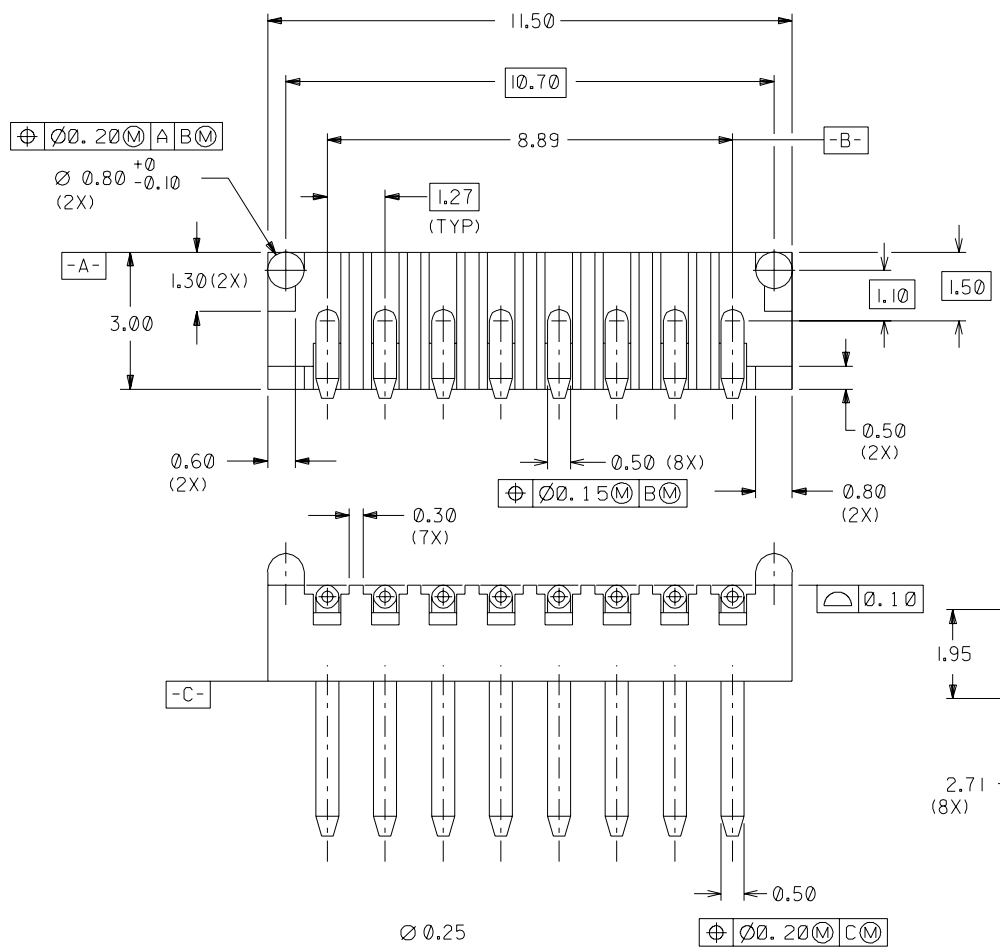


DWG. NO. SD_87026-0001
 CAD FILE S8702601.DGN

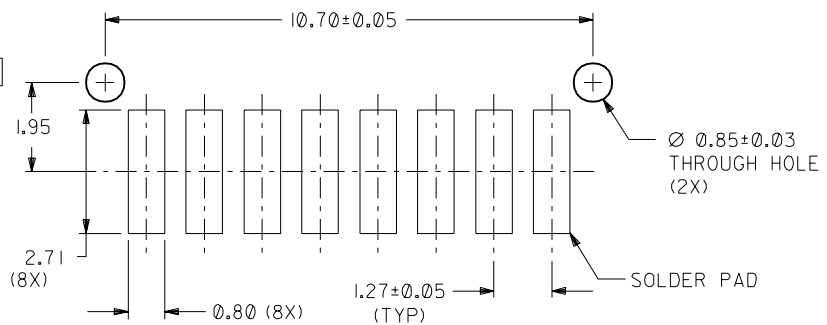
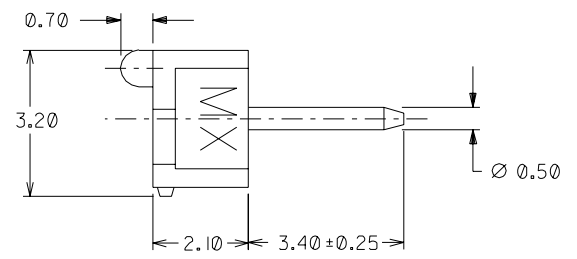
▽

DO NOT SCALE DRAWING

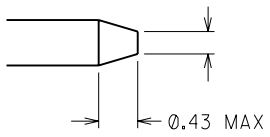


NOTES:

- MATERIAL:**
 HOUSING - LCP, 30% GLASS-FILLED, UL RATED 94V-0
 COLOR: NATURAL
 PIN - BRASS
 PLATING: 0.25μM MINIMUM GOLD OVER 1.27μM
 MINIMUM NICKEL OVERALL.
- PART SUPPLIED IN PACKAGING TUBE.**



ALL DIMENSIONS IN MM



				MATERIAL :		SEE NOTE 1		MOLEX SINGAPORE PTE LTD	
				FINISH :		SEE NOTE 1		SHEET 1 OF 1	
				GENERAL TOLERANCES :		0.18/0.04		REV B	
				DRAWN BY		940818 ERPOH		DWG. NO. SD_87026-0001	
				CHK'D BY		940919 KCLING		TITLE : ASSEMBLY, 1.27MM CENTER HEADER, SURFACE-MOUNT	
				APPR'D BY		940919 MARC		SCALE 10 : 1	
LTR				REVISION RECORD		ECN		DATE	
B				ADDITION OF RIB AS PER ECN		S60498 KCHU		960418	
A				RELEASE PER ECN		S50071 ERPOH		940818	
DR				CHK		DATE		SCALE	
REVISE ONLY ON CAD SYSTEM									