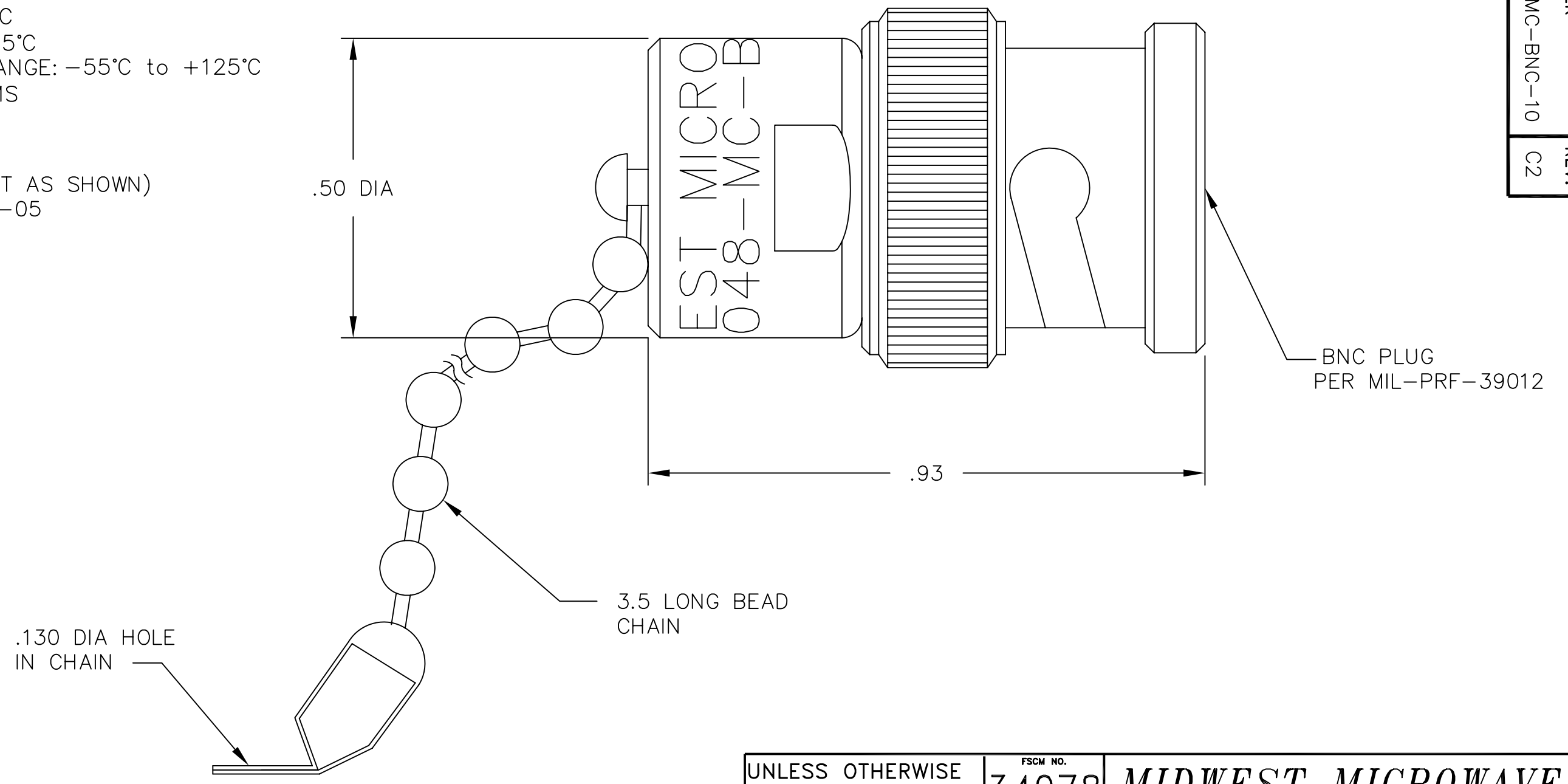


NOTES:
 1.0 ELECTRICAL SPECIFICATIONS:
 1.1 FREQUENCY RANGE: DC to 4.0 GHz
 1.2 INPUT POWER:
 2 WATTS @ +25°C
 0.5 WATTS @ +125°C
 1.3 OPERATING TEMP RANGE: -55°C to +125°C
 1.4 IMPEDANCE: 50 OHMS
 1.5 VSWR: 1.20:1 MAX

 2.0 MARKING: (MARK UNIT AS SHOWN)
 REF: INK-02638-27-05



REV.	DESCRIPTION	DATE
-	RELEASED	8/8/87
A	ECR 5857	2/17/88
B	ECR 6545 (RENUMBER)	8/1/89
C	ECN 10572	5/24/91
C1	REDRAW ON CAD	9/24/91
C2	ADDED TITLEBLOCK	10/26/05

UNLESS OTHERWISE NOTED DIMENSIONS ARE IN INCHES AND TOLERANCES ARE: 3 PLACE DECIMALS ±.005 2 PLACE DECIMALS ±.02 FRACTIONS ±1/64 PARALLELITY: T.I.R. _____ FLATNESS: T.I.R. _____ CONCENTRICITY: T.I.R. _____ ANGLES AND PERPENDICULARITY: ±1'	FSCM NO. 34078	MIDWEST MICROWAVE	
	NOTICE: The information contained in this drawing is proprietary and must not be used without the permission of Midwest Microwave		TITLE TERMINATION
DRAWN/DATE A.BEATTY 9/24/91	ENG./DATE G.KOZAK 9/24/91	DRAWING NUMBER TRM-2048-MC-BNC-10	
CHECKED/DATE C.RIGGE 9/24/91	APPROVED/DATE	SCALE: 5=1	SHEET 1 of 1