

SAFETY ORGANIZATION(S):

THIS FILTER HAS BEEN FORMALLY RECOGNIZED, CERTIFIED OR APPROVED BY THE LISTED AGENCY. THEREFORE, ALL TEST/REQUIREMENTS SPECIFIED IN THE LATEST REVISION OF THE FOLLOWING AGENCY STANDARDS HAVE BEEN MET:

UL RECOGNIZED  
CSA CERTIFIED  
VDE APPROVED

UL 1283  
CSA 22.2, NO. 0, 0.4, 8  
VDE 565-3

OPERATING SPECIFICATIONS:

LINE VOLTAGE/CURRENT:  
10 AMP., 120/250 VAC  
8 AMP/40°C, 250 VAC

LINE FREQUENCY:  
50-60Hz

MAX. LEAKAGE CURRENT, EACH LINE TO GROUND  
1.25 mA @ 120V 60Hz  
2.10 mA @ 250V 50Hz

OPERATING AMBIENT TEMP. RANGE:  
-10°C TO +40°C @ RATED CURRENT, I<sub>r</sub>

IN AN AMBIENT, T<sub>a</sub>, HIGHER THAN 40°C, THE MAXIMUM OPERATING CURRENT, I<sub>o</sub>, IS AS FOLLOWS:

$$I_o = I_r \sqrt{\frac{85 - T_a}{45}}$$

RELIABILITY SPECIFICATIONS:

STORAGE TEMPERATURE:  
-25°C TO +85°C

HUMIDITY:  
21 DAYS @ 40°C 95% RH

CURRENT OVERLOAD TEST:  
6 TIMES RATED CURRENT FOR 8 SECONDS

TEST SPECIFICATIONS:

INDUCTANCE:  
L 7.178 mH NOMINAL  
N 7.142 mH NOMINAL

CAPACITANCE: (MEASURED @ 1 KHz, 0.25 VAC MAX., 25°C ±1°C)  
LINE TO GROUND:  
.0155µF ±20%

LINE TO LINE:  
.74µF ±20%

DISCHARGE RESISTOR:  
330KΩ

LINE/GROUND AND LINE/LINE INSULATION RESISTANCE (W/O DISCHARGE RESISTOR)  
6000 MΩ (MIN) AT 100 VDC  
20°C AND 50% RH

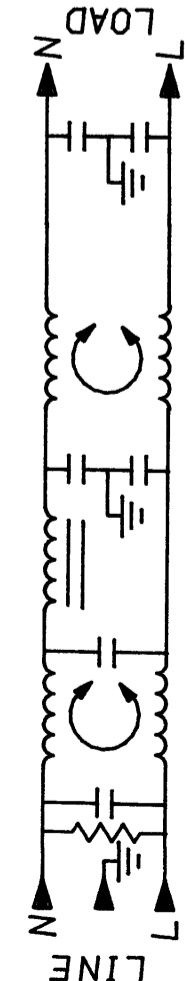
RECOMMENDED RECEIVING INSPECTION HIPOT:

LINES TO GROUND:  
2250 VDC FOR 1 MINUTE

LINE TO LINE:  
1450 VDC FOR 1 MINUTE

FILTER APPROVAL:

THE BEST WAY TO SELECT AND QUALIFY A FILTER IS FOR YOUR ENGINEERING TO TEST THE UNIT IN YOUR EQUIPMENT.



50Ω - 50Ω (MINIMUM) INSERTION LOSS											
FREQUENCY MHz	.01	.05	.1	.15	.5	1	5	10	20	30	
COMMON dB	5	10	24	37	50	72	70	70	70	60	60
DIFF. dB	5	5	7	26	39	65	65	65	70	70	70

This document is proprietary to CORCOM INC. and is not to be reproduced nor used for manufacturing purposes except on CORCOM's order or prior written consent.

TOLERANCE EXCEPT AS NOTED  
DECIMAL: .XXX .XX .X ANGLES ± 1°  
ENGLISH: ±.025  
METRIC: ±

**CORCOM**  
LIBERTYVILLE, IL 60048

POWER LINE FILTER

SCALE	DATE	DRG. NO.	REV.
NTS	8-16-90	10VG1.01	01
DRW. BY	ORIGINATOR		
CFW	CFW		

