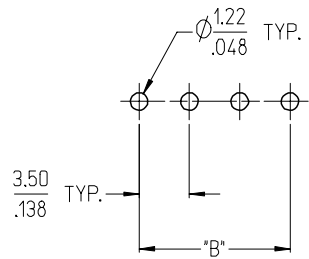
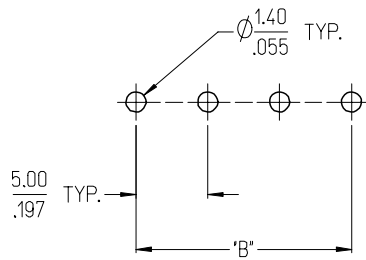


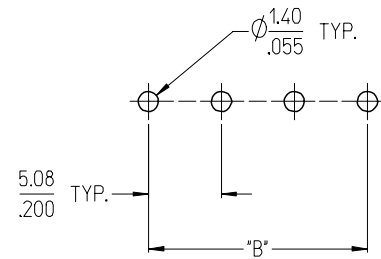
3950X SERIES  
3.50mm HEADERS



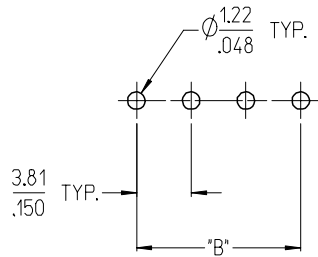
3952X & 3954X SERIES  
5.00mm HEADERS  
5.00mm 10 AMP FIXED



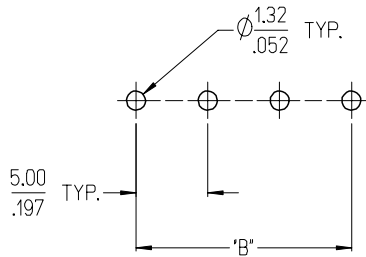
3953X SERIES  
5.08mm HEADERS



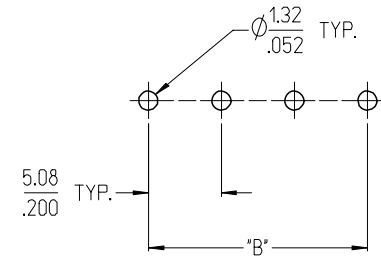
3951X SERIES  
3.81mm HEADERS



3954X SERIES  
5.00mm 15 AMP FIXED



3954X SERIES  
5.08mm 15 AMP FIXED



NOTES:

- REFER TO INDIVIDUAL PRODUCT SALES DRAWINGS FOR "B" DIMENSION.
- DOES NOT APPLY TO DUAL LEVEL HEADERS, SERIES 39528 AND 39538.
- TYP. = TYPICAL.

|                 |                     |
|-----------------|---------------------|
| INITIAL RELEASE | EC NO: ETC2007-0096 |
| DRWN: CLYORK    | 2006/10/02          |
| CHKD: JMACNEIL  | 2006/10/04          |
| APPR: JMACNEIL  | 2006/10/04          |
| REV             | DESCRIPTION         |
| A               |                     |

|                 |
|-----------------|
| QUALITY SYMBOLS |
| ◀=0             |
| ▽=0             |

| GENERAL TOLERANCES (UNLESS SPECIFIED)                |        |         |
|--|--------|---------|
|  | MM     | INCH    |
| 4 PLACES   | ± .005 | ± .0005 |
| 3 PLACES   | ± .01  | ± .001  |
| 2 PLACES   | ± 0.13 | ± .01   |
| 1 PLACE  | ± 0.3  | ± .01   |
| ANGULAR ± 2 °  |        |         |
| DRAFT WHERE APPLICABLE MUST REMAIN WITHIN DIMENSIONS |        |         |

| DIMENSION STYLE |            |
|-----------------|------------|
| MM/IN           |            |
| DRAWN BY        | DATE       |
| C. YORK         | 2006/08/25 |
| CHECKED BY      | DATE       |
| J. MACNEIL      | 2006/08/25 |
| APPROVED BY     | DATE       |
| J. MACNEIL      | 2006/08/25 |
| MATERIAL NO.    |            |
| --              |            |

|  |              |                        |
|--|--------------|------------------------|
| SCALE  | DESIGN UNITS | THIRD ANGLE PROJECTION |
| 3:1  | INCH         |                        |
| TITLE  |              |                        |
| RECOMMENDED PCB LAYOUT FOR ESE TERMINAL BLOCKS   |              |                        |
| MOLEX INCORPORATED   |              |                        |
| DOCUMENT NO.   | SHEET NO.    |                        |
| SD-39501-002   | 1 OF 1       |                        |
| SIZE B THIS DRAWING CONTAINS INFORMATION THAT IS PROPRIETARY TO MOLEX INCORPORATED AND SHOULD NOT BE USED WITHOUT WRITTEN PERMISSION |              |                        |

10 9 8 7 6 5 4 3 2 1

F

E

D

C

B

A

F

E

D

C

B

A

**SPECIFICATIONS:**

**1. Material:**

- (1). Body: PA46
- (2). Pin: Brass
- (3). Threaded insert: Brass

**2. Wire range: N/A**

**3. Electrical rating: 300V, 15A.**

**4. Wire strip length: N/A**

**5. Operating temperature: -40C to +140C.**

**6. Max torque: N/A**

**7. Insulation resistance: DC 500V, 500M.**

**8. Dielectric withstand: AC 2500V for 1 minute.**

**9. Breakdown voltage: 4000V.**

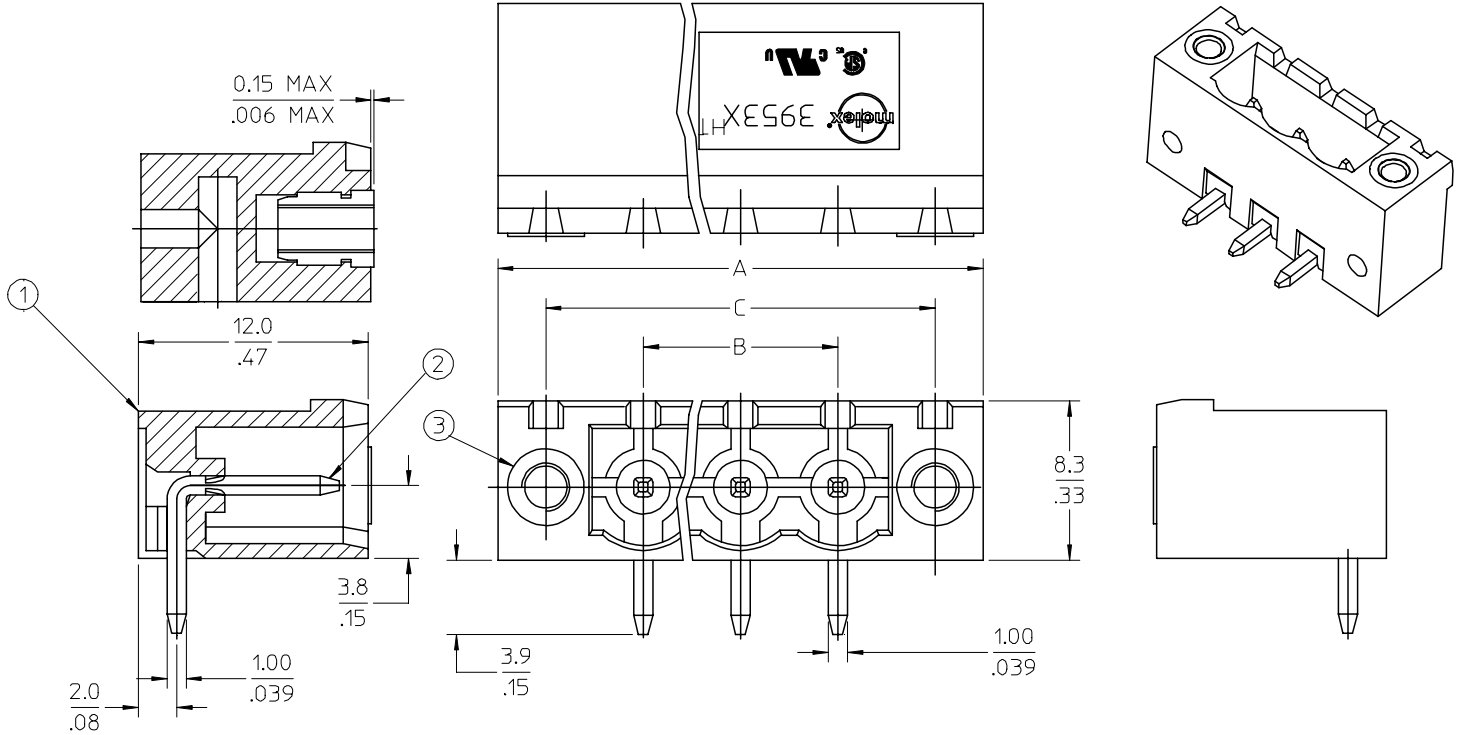
**10. A = (B + 15.24mm)**

**11. B = (N - 1) x P**

**13. C = (B + 10.16mm)**

**12. P (PITCH) = 5.08mm (.200").**

**13. N = Number of positions available 2 through 24.**



|  |  |                                       |  |                          |  |                     |   |                        |  |
|--|--|---------------------------------------|--|--------------------------|--|---------------------|---|------------------------|--|
| ENTER DESCRIPTION<br>EC NO: NEO2006-0310<br>DRWNL: LROTHAUS 2006/01/09<br>CHKD: C YORK 2006/01/09<br>APPR: JPAMLICK 2006/01/10 | DESCRIPTION<br>QUALITY SYMBOLS<br>▽=0<br>▽=0 | GENERAL TOLERANCES (UNLESS SPECIFIED) |  | DIMENSION STYLE<br>MM/IN |  | SCALE<br>4:1        | DESIGN UNITS<br>INCH  | THIRD ANGLE PROJECTION |  |
|  |  |                                       | mm   | INCH                     | DRAWN BY<br>LROTHAUS   | DATE<br>12/6/05     | TITLE<br>5.08MM, EURO HEADER,<br>RIGHT ANGLE, HI-TEMP<br>MOUNTING |                        |  |
|  |  | 4 PLACES                              | ± ---  | ± .0015                  | CHECKED BY<br>C. YORK  | DATE<br>01/06/06    |   |                        |  |
|  |  | 3 PLACES                              | ± 0.038  | ± .005                   | APPROVED BY  | DATE                | MOLEX INCORPORATED  |                        |  |
| 2 PLACES   | ± 0.13                                       | ± .01                                 | MATERIAL NO.<br>SEE CHART                                  |                          | DOCUMENT NO.<br>SD-39536-001   | SHEET NO.<br>1 OF 1 |   |                        |  |
| 1 PLACE  | ± 0.3  | ± ---                                 | DRAFT WHERE APPLICABLE<br>MUST REMAIN<br>WITHIN DIMENSIONS |                          | THIS DRAWING CONTAINS INFORMATION THAT IS PROPRIETARY TO MOLEX<br>INCORPORATED AND SHOULD NOT BE USED WITHOUT WRITTEN PERMISSION |                     |   |                        |  |
|  |  | ANGULAR ± 2 °                         |  |                          |  |                     |   |                        |  |

9 8 7 6 5 4 3 2 1

| Description  | Circuit size | Material Numbers |           |           |                  |           |           |                  |           |           |                  |           | Dimensional Information |        |        |        |        |        |       |
|--|--------------|------------------|-----------|-----------|------------------|-----------|-----------|------------------|-----------|-----------|------------------|-----------|-------------------------|--------|--------|--------|--------|--------|-------|
|  |              | Black            |           |           |                  |           |           | Green            |           |           |                  |           | Dim. A                  |        | Dim. B |        | Dim. C |        |       |
|  |              | 100% Tin         |           |           | 30 u" Gold       |           |           | 100% Tin         |           |           | 30 u" Gold       |           | mm                      | inch   | mm     | inch   | mm     | inch   |       |
|  |              | Printing Options |           |           | Printing Options |           |           | Printing Options |           |           | Printing Options |           |                         |        |        |        |        |        |       |
| None   | 10A          | 11A              | None      | 10A       | 11A              | None      | 10A       | 11A              | None      | 10A       | 11A              | None      | 10A                     | 11A    |        |        |        |        |       |
| 5.08mm, Euro Header, Right Angle, Mounting Ends, High Temp | 2            | 395364002        | 395364102 | 395364202 | 395364502        | 395364602 | 395364702 | 395369002        | 395369102 | 395369202 | 395369502        | 395369602 | 395369702               | 20.32  | 0.800  | 5.08   | 0.200  | 15.24  | 0.600 |
| 5.08mm, Euro Header, Right Angle, Mounting Ends, High Temp | 3            | 395364003        | 395364103 | 395364203 | 395364503        | 395364603 | 395364703 | 395369003        | 395369103 | 395369203 | 395369503        | 395369603 | 395369703               | 25.40  | 1.000  | 10.16  | 0.400  | 20.32  | 0.800 |
| 5.08mm, Euro Header, Right Angle, Mounting Ends, High Temp | 4            | 395364004        | 395364104 | 395364204 | 395364504        | 395364604 | 395364704 | 395369004        | 395369104 | 395369204 | 395369504        | 395369604 | 395369704               | 30.48  | 1.200  | 15.24  | 0.600  | 25.40  | 1.000 |
| 5.08mm, Euro Header, Right Angle, Mounting Ends, High Temp | 5            | 395364005        | 395364105 | 395364205 | 395364505        | 395364605 | 395364705 | 395369005        | 395369105 | 395369205 | 395369505        | 395369605 | 395369705               | 35.56  | 1.400  | 20.32  | 0.800  | 30.48  | 1.200 |
| 5.08mm, Euro Header, Right Angle, Mounting Ends, High Temp | 6            | 395364006        | 395364106 | 395364206 | 395364506        | 395364606 | 395364706 | 395369006        | 395369106 | 395369206 | 395369506        | 395369606 | 395369706               | 40.64  | 1.600  | 25.40  | 1.000  | 35.56  | 1.400 |
| 5.08mm, Euro Header, Right Angle, Mounting Ends, High Temp | 7            | 395364007        | 395364107 | 395364207 | 395364507        | 395364607 | 395364707 | 395369007        | 395369107 | 395369207 | 395369507        | 395369607 | 395369707               | 45.72  | 1.800  | 30.48  | 1.200  | 40.64  | 1.600 |
| 5.08mm, Euro Header, Right Angle, Mounting Ends, High Temp | 8            | 395364008        | 395364108 | 395364208 | 395364508        | 395364608 | 395364708 | 395369008        | 395369108 | 395369208 | 395369508        | 395369608 | 395369708               | 50.80  | 2.000  | 35.56  | 1.400  | 45.72  | 1.800 |
| 5.08mm, Euro Header, Right Angle, Mounting Ends, High Temp | 9            | 395364009        | 395364109 | 395364209 | 395364509        | 395364609 | 395364709 | 395369009        | 395369109 | 395369209 | 395369509        | 395369609 | 395369709               | 55.88  | 2.200  | 40.64  | 1.600  | 50.80  | 2.000 |
| 5.08mm, Euro Header, Right Angle, Mounting Ends, High Temp | 10           | 395364010        | 395364110 | 395364210 | 395364510        | 395364610 | 395364710 | 395369010        | 395369110 | 395369210 | 395369510        | 395369610 | 395369710               | 60.96  | 2.400  | 45.72  | 1.800  | 55.88  | 2.200 |
| 5.08mm, Euro Header, Right Angle, Mounting Ends, High Temp | 11           | 395364011        | 395364111 | 395364211 | 395364511        | 395364611 | 395364711 | 395369011        | 395369111 | 395369211 | 395369511        | 395369611 | 395369711               | 66.04  | 2.600  | 50.80  | 2.000  | 60.96  | 2.400 |
| 5.08mm, Euro Header, Right Angle, Mounting Ends, High Temp | 12           | 395364012        | 395364112 | 395364212 | 395364512        | 395364612 | 395364712 | 395369012        | 395369112 | 395369212 | 395369512        | 395369612 | 395369712               | 71.12  | 2.800  | 55.88  | 2.200  | 66.04  | 2.600 |
| 5.08mm, Euro Header, Right Angle, Mounting Ends, High Temp | 13           | 395364013        | 395364113 | 395364213 | 395364513        | 395364613 | 395364713 | 395369013        | 395369113 | 395369213 | 395369513        | 395369613 | 395369713               | 76.20  | 3.000  | 60.96  | 2.400  | 71.12  | 2.800 |
| 5.08mm, Euro Header, Right Angle, Mounting Ends, High Temp | 14           | 395364014        | 395364114 | 395364214 | 395364514        | 395364614 | 395364714 | 395369014        | 395369114 | 395369214 | 395369514        | 395369614 | 395369714               | 81.28  | 3.200  | 66.04  | 2.600  | 76.20  | 3.000 |
| 5.08mm, Euro Header, Right Angle, Mounting Ends, High Temp | 15           | 395364015        | 395364115 | 395364215 | 395364515        | 395364615 | 395364715 | 395369015        | 395369115 | 395369215 | 395369515        | 395369615 | 395369715               | 86.36  | 3.400  | 71.12  | 2.800  | 81.28  | 3.200 |
| 5.08mm, Euro Header, Right Angle, Mounting Ends, High Temp | 16           | 395364016        | 395364116 | 395364216 | 395364516        | 395364616 | 395364716 | 395369016        | 395369116 | 395369216 | 395369516        | 395369616 | 395369716               | 91.44  | 3.600  | 76.20  | 3.000  | 86.36  | 3.400 |
| 5.08mm, Euro Header, Right Angle, Mounting Ends, High Temp | 17           | 395364017        | 395364117 | 395364217 | 395364517        | 395364617 | 395364717 | 395369017        | 395369117 | 395369217 | 395369517        | 395369617 | 395369717               | 96.52  | 3.800  | 81.28  | 3.200  | 91.44  | 3.600 |
| 5.08mm, Euro Header, Right Angle, Mounting Ends, High Temp | 18           | 395364018        | 395364118 | 395364218 | 395364518        | 395364618 | 395364718 | 395369018        | 395369118 | 395369218 | 395369518        | 395369618 | 395369718               | 101.60 | 4.000  | 86.36  | 3.400  | 96.52  | 3.800 |
| 5.08mm, Euro Header, Right Angle, Mounting Ends, High Temp | 19           | 395364019        | 395364119 | 395364219 | 395364519        | 395364619 | 395364719 | 395369019        | 395369119 | 395369219 | 395369519        | 395369619 | 395369719               | 106.68 | 4.200  | 91.44  | 3.600  | 101.60 | 4.000 |
| 5.08mm, Euro Header, Right Angle, Mounting Ends, High Temp | 20           | 395364020        | 395364120 | 395364220 | 395364520        | 395364620 | 395364720 | 395369020        | 395369120 | 395369220 | 395369520        | 395369620 | 395369720               | 111.76 | 4.400  | 96.52  | 3.800  | 106.68 | 4.200 |
| 5.08mm, Euro Header, Right Angle, Mounting Ends, High Temp | 21           | 395364021        | 395364121 | 395364221 | 395364521        | 395364621 | 395364721 | 395369021        | 395369121 | 395369221 | 395369521        | 395369621 | 395369721               | 116.84 | 4.600  | 101.60 | 4.000  | 111.76 | 4.400 |
| 5.08mm, Euro Header, Right Angle, Mounting Ends, High Temp | 22           | 395364022        | 395364122 | 395364222 | 395364522        | 395364622 | 395364722 | 395369022        | 395369122 | 395369222 | 395369522        | 395369622 | 395369722               | 121.92 | 4.800  | 106.68 | 4.200  | 116.84 | 4.600 |
| 5.08mm, Euro Header, Right Angle, Mounting Ends, High Temp | 23           | 395364023        | 395364123 | 395364223 | 395364523        | 395364623 | 395364723 | 395369023        | 395369123 | 395369223 | 395369523        | 395369623 | 395369723               | 127.00 | 5.000  | 111.76 | 4.400  | 121.92 | 4.800 |
| 5.08mm, Euro Header, Right Angle, Mounting Ends, High Temp | 24           | 395364024        | 395364124 | 395364224 | 395364524        | 395364624 | 395364724 | 395369024        | 395369124 | 395369224 | 395369524        | 395369624 | 395369724               | 132.08 | 5.200  | 116.84 | 4.600  | 127.00 | 5.000 |

|  |   |  |   |  |   |  |
|--|---|--|---|--|---|--|
| SEE SHEET 1<br>EC NO: NEC2006-0310<br>DRWNL: LROTHAUS 2006/01/09<br>CHKDC: CYORK 2006/01/09<br>APPR: J.PAWLIK 2006/01/10 | QUALITY SYMBOLS<br>▽=0<br>▽=0   | GENERAL TOLERANCES (UNLESS SPECIFIED)<br>mm INCH<br>4 PLACES ± --- ±.0015<br>3 PLACES ±0.038 ±.005<br>2 PLACES ±0.13 ±.01<br>1 PLACE ±0.3 ± ---<br>ANGULAR ± 2 ° | DIMENSION STYLE<br>MM/IN<br>DRAWN BY DATE<br>LROTHAUS 12/16/05<br>CHECKED BY DATE<br>C. YORK 01/05/06<br>APPROVED BY DATE | SCALE<br>4:1<br>DESIGN UNITS<br>INCH<br>THIRD ANGLE PROJECTION | TITLE<br>5.08MM, EURO HEADER, RIGHT ANGLE, HI-TEMP MOUNTING |  |
|  | MATERIAL NO.<br>SEE CHART   | DOCUMENT NO.<br>SD-39536-001   | SHEET NO.<br>2 OF 2   |  |   |  |
|  | DRAFT WHERE APPLICABLE MUST REMAIN WITHIN DIMENSIONS  |  |   | MOLEX INCORPORATED   |   |  |
|  | THIS DRAWING CONTAINS INFORMATION THAT IS PROPRIETARY TO MOLEX INCORPORATED AND SHOULD NOT BE USED WITHOUT WRITTEN PERMISSION |  |   |  |   |  |